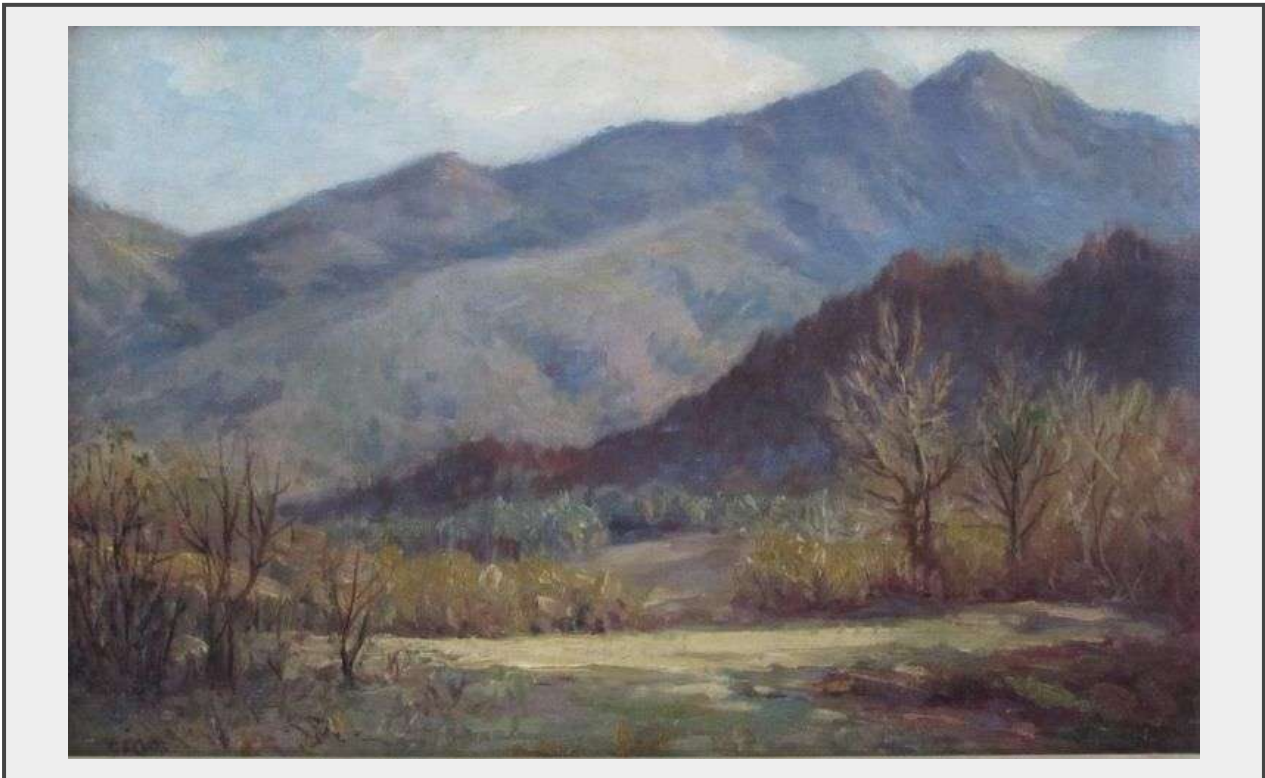


Sale Name: Fine Canadian Art Auction - September 8th - October 18th 2022

LOT 90 - Gertrude Cutts - Untitled Mountain Landscape



Artist Description Gertrude Eleanor Spurr Cutts (1858 – 1941 CAD) O.S.A. Gertrude Spurr Cutts was born in Scarborough, Yorkshire, England, in 1858, the daughter of James Frederick Spurr and Laura Spurr (née Radley). She received her first instruction in art in 1875 from the Yorkshire-based artist Edward H. Holder (1847-1922). Five years later, Spurr enrolled at the Lambeth School of Art in London, where she was a student of William S. Llewellyn (1858-1941) and John H. Smith (active 1830-1893). During trips home, Spurr studied under Albert Strange at the Scarborough School of Art, receiving prizes there in 1884 and 1886. In the late 1880s, she spent time sketching in Belgium and the Netherlands, while also exhibiting in London at the Royal Society of British Artists and the Society of Women Artists. In 1890 Spurr joined her family in Toronto (they had immigrated to Canada in 1888), where she opened a studio and became involved with the local art scene. In 1891 she was admitted to membership in the Ontario Society of Artists and, by the following year, had become active in the Toronto Art Students' League. Over the next two decades Spurr found time to sketch in southern Ontario, Quebec, northeastern United States, and Europe, and to contribute to exhibitions organized by the Ontario Society of Artists, the Canadian National Exhibition, the Royal Canadian Academy, and the Art Association of Montreal. Her paintings and sketches were also shown at the Chicago World's Fair in 1893, the Pan American Exposition, Buffalo, in 1901, and the Universal Exposition, St. Louis, in 1904. In 1909 Spurr married the artist William Malcolm Cutts (1857-1943). The couple resided for the next three years in Cornwall, England, before returning to Toronto, where several paintings they had produced during their time abroad were exhibited at the Mackenzie & Company Gallery on Yonge Street. Three years later, in 1915, Gertrude and William moved to Port Perry, Ontario, on Lake Scugog, where they continued to devote much of their time to sketching and painting. Gertrude Spurr Cutts died in Port Perry in 1941.

Description

Oil On Board

Signed Lower Left

Sight - 9 ins x 13.5 ins (22.86 cm x 34.29 cm)

Provenance:

Private Collection

Quantity: 1



<https://www.northrow.ca/>