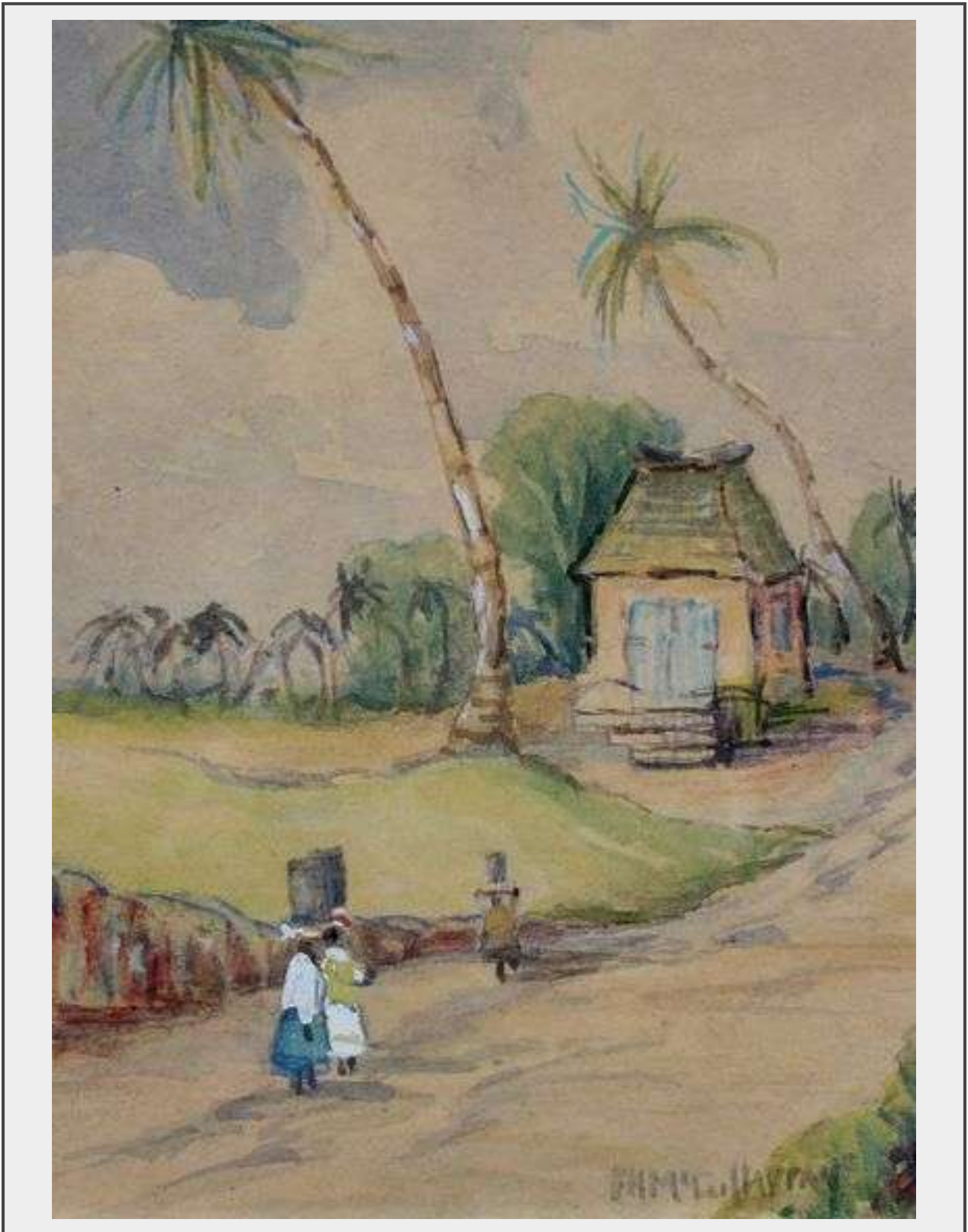


**Sale Name:** Watercolours Thursday January 12th 7:00 pm

**LOT 68 - F.H. McGillivray - Untitled Barbados Village Scene**



**Artist Description** Florence Helena McGillivray (1864 – 1938 CAD) R.C.A. Born in Pickering Township in Ontario. She attended the Central Ontario School of Art (now the Ontario College of Art) in Toronto, where she studied with William Cruikshank. McGillivray then began taking private lessons from teachers such as Farquhar McGillivray Knowles and Lucius Richard O'Brien. In 1912, she went to France to study

at the Académie de la Grande Chaumière with Lucien Simon and Émile-René Ménard (1862–1930). But her real inspiration was the artist Frédéric Fiebig and though she experimented at first with a wide range of Post-Impressionist styles, she began to work in a style that reflected his influence, involving the use of the palette knife and with a heavier application of paint. That year, she showed her new work at the Salon des Beaux Arts. McGillivray moved back to Canada in 1914 due to the outbreak of World War I. The most prolific and vibrant phase of her artistic career occurred during the 1920s while she lived in Ottawa, where she set up a studio on Frank Street. Her work from this period is rich in colour and texture, reflecting the Post-Impressionist work she had encountered in Europe. Her method of rendering forms in massed areas of colour applied in places with the palette knife and strong black lines around forms, made her work stand out in the Canada of her day. This technique was sympathetic to Tom Thomson, who admired her and said of her, "she is one of the best". McGillivray was one of the first women artists to paint the landscape of northern Ontario and Quebec. Her work depicted many locations on the Gatineau River, the Val-des-Bois, the Ottawa River at Fort-Coulonge and many more scenes of Canada and abroad in places such as Europe, Bermuda, Jamaica, Trinidad, Barbadoes and the Bahamas. She was part of the group of artists that linked the romantic-realist view of the railway artists in the 1880s and 1890s and the view of the landscape that characterized the work of the Group of Seven and their adherents following the World War I.

### Description

*Watercolour*

Signed Lower Right

Sight - 8 ins x 5.5 ins (20.32 cm x 13.97 cm)

### Provenance:

Private Collection

**Quantity: 1**



<https://www.northrow.ca/>